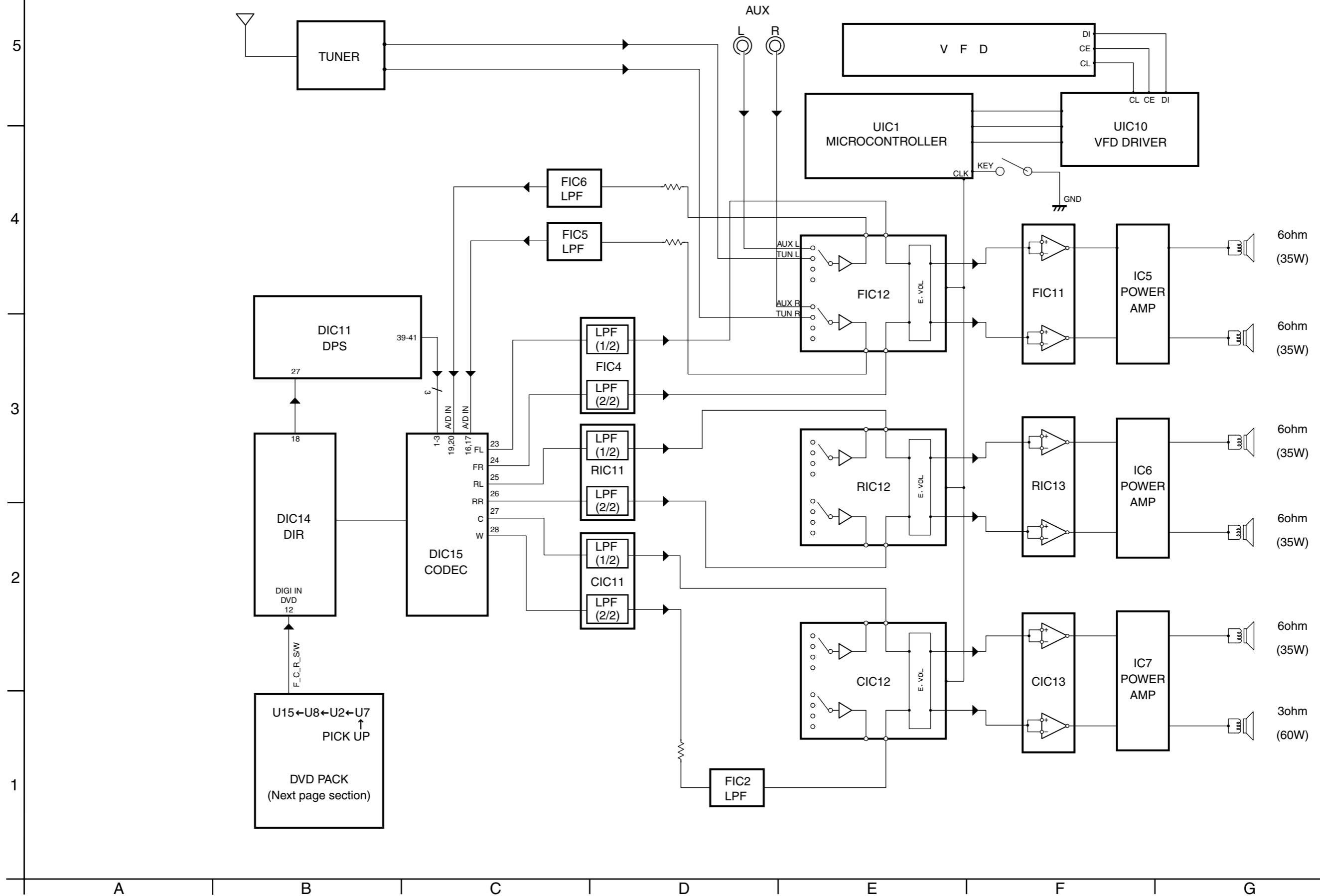
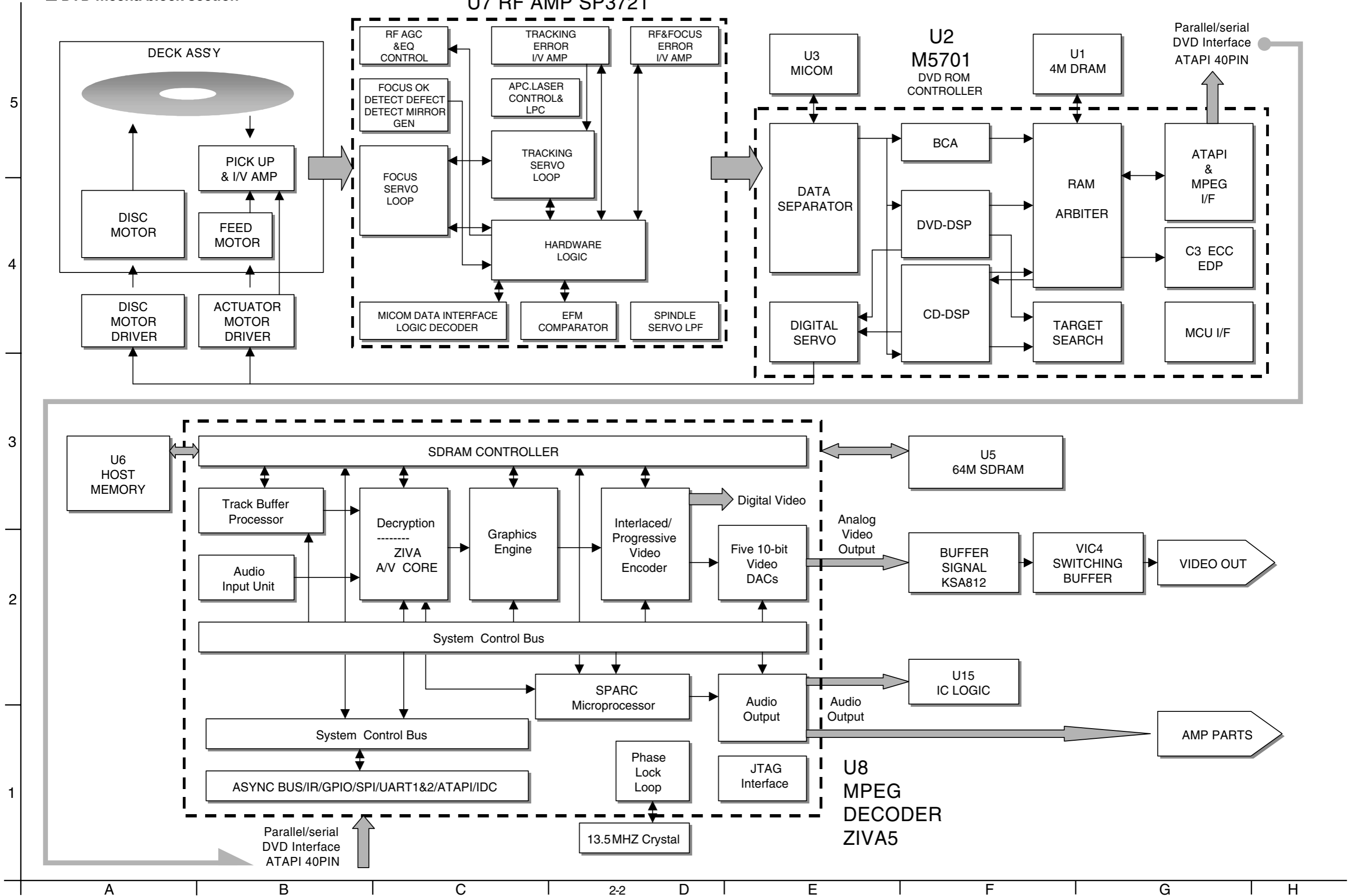


# Block diagrams

■ Main section



■ DVD mecha block section





■ Main section

(AMP+PROTECTION+FAN)

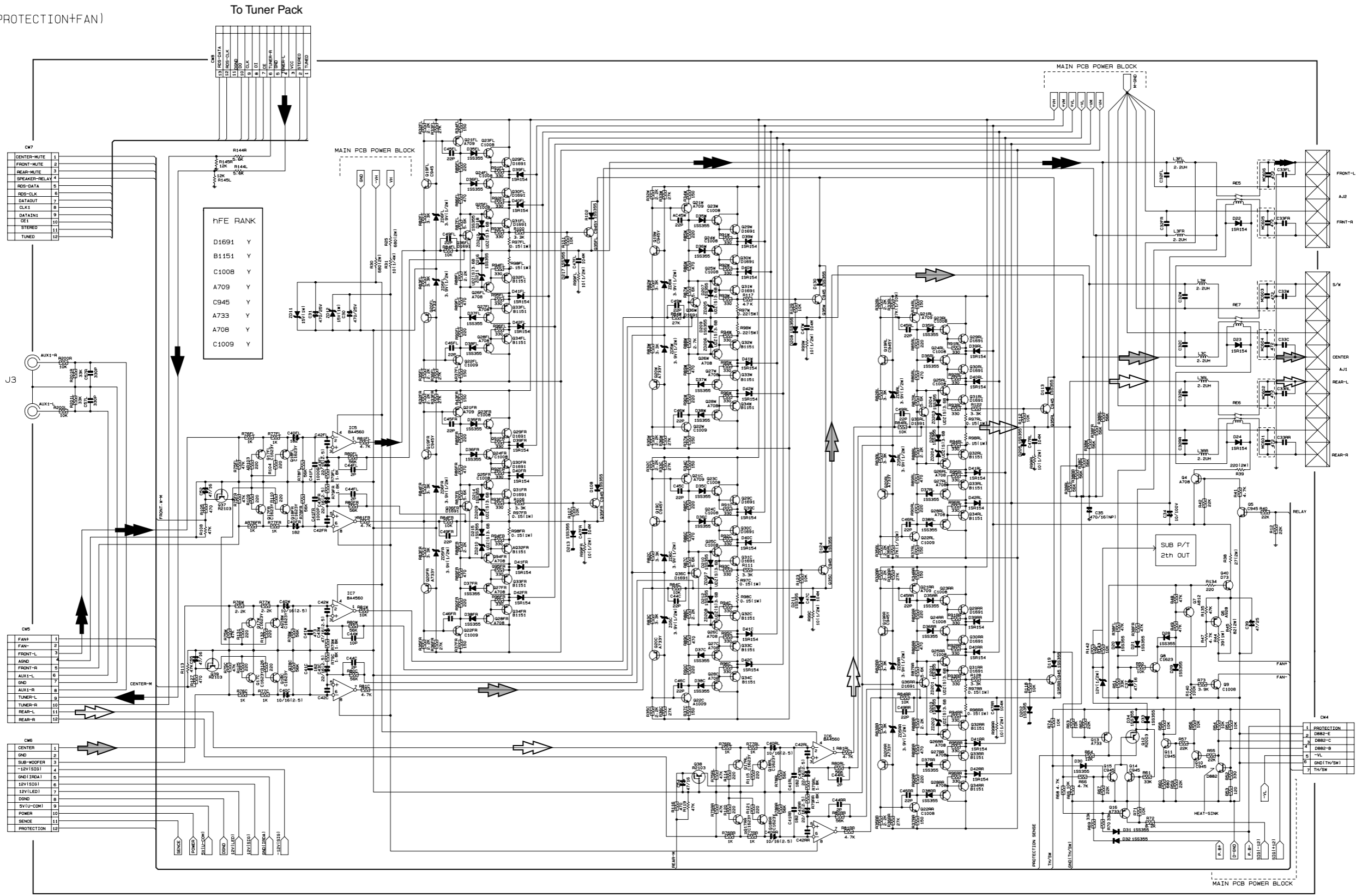
5

4

3

2

1



To DW14  
Sheet 4/6

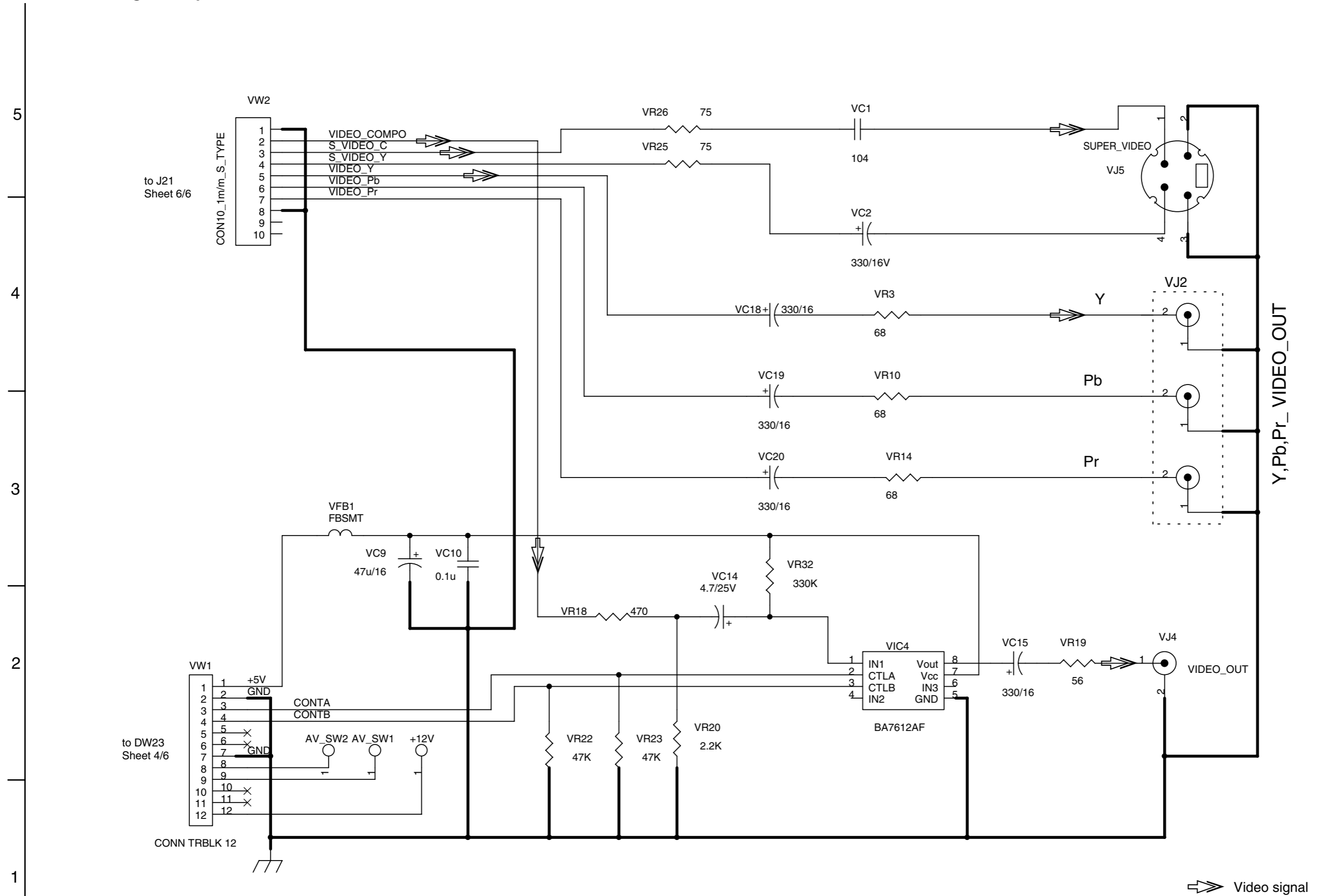
To DW10  
Sheet 4/6

To DW13  
Sheet 4/6

To PW5  
Sheet 1/6

- ➔ Tuner signal
- ➔ Front signal
- ➔ Center signal
- ➔ Rear signal

Video signal output section



to J21  
Sheet 6/6

to DW23  
Sheet 4/6

Y,Pb,Pr\_ VIDEO\_OUT

Video signal

DSP section

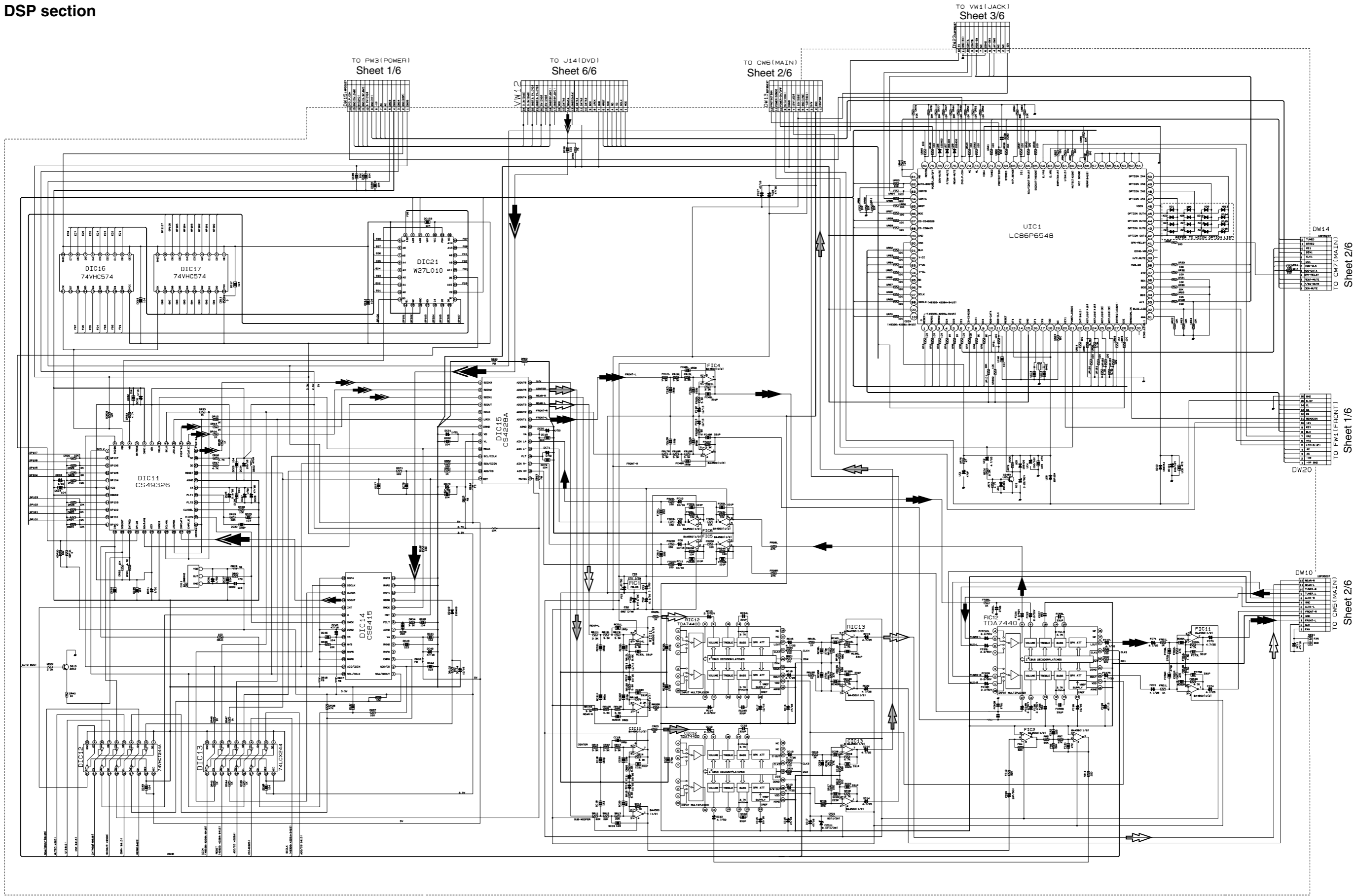
5

4

3

2

1



A B C 26 D E F G H

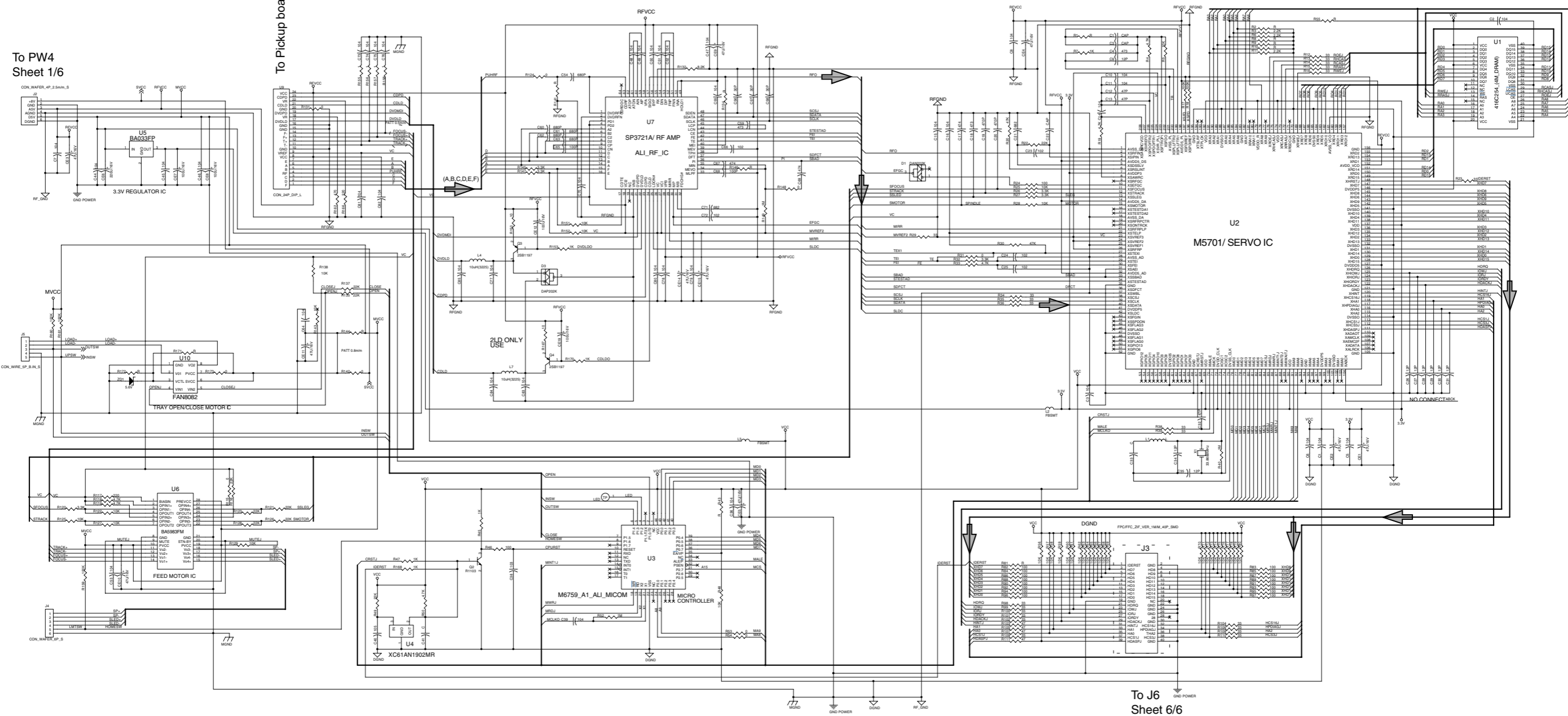
■ DVD loader section

5  
4  
3  
2  
1

To PW4  
Sheet 1/6

To Pickup board

To J6  
Sheet 6/6



➔ Digital data signal

A B C D E F G

DVD MPEG section

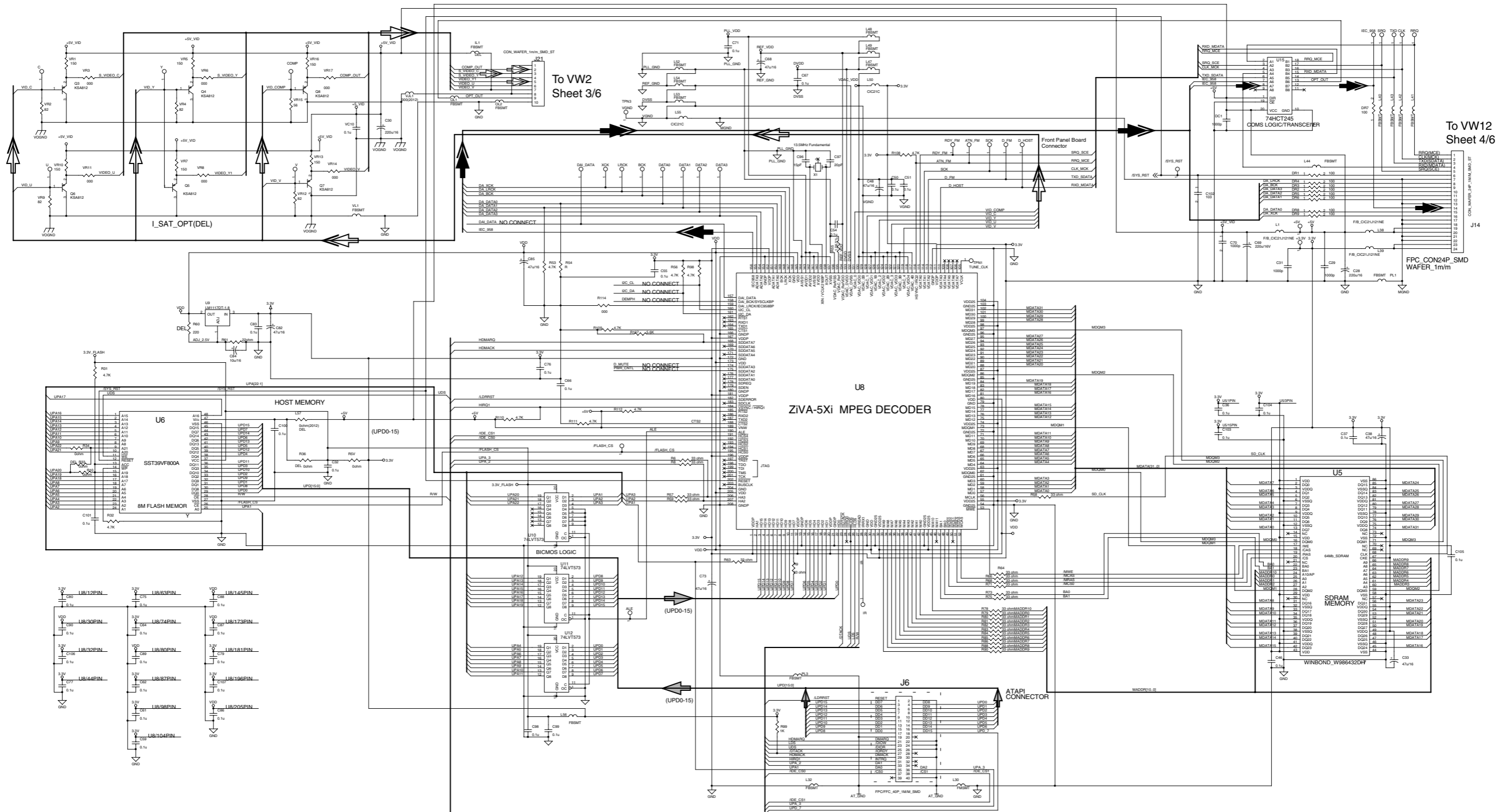
5

4

3

2

1



To VW2 Sheet 3/6

To VW12 Sheet 4/6

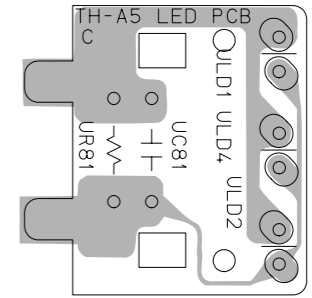
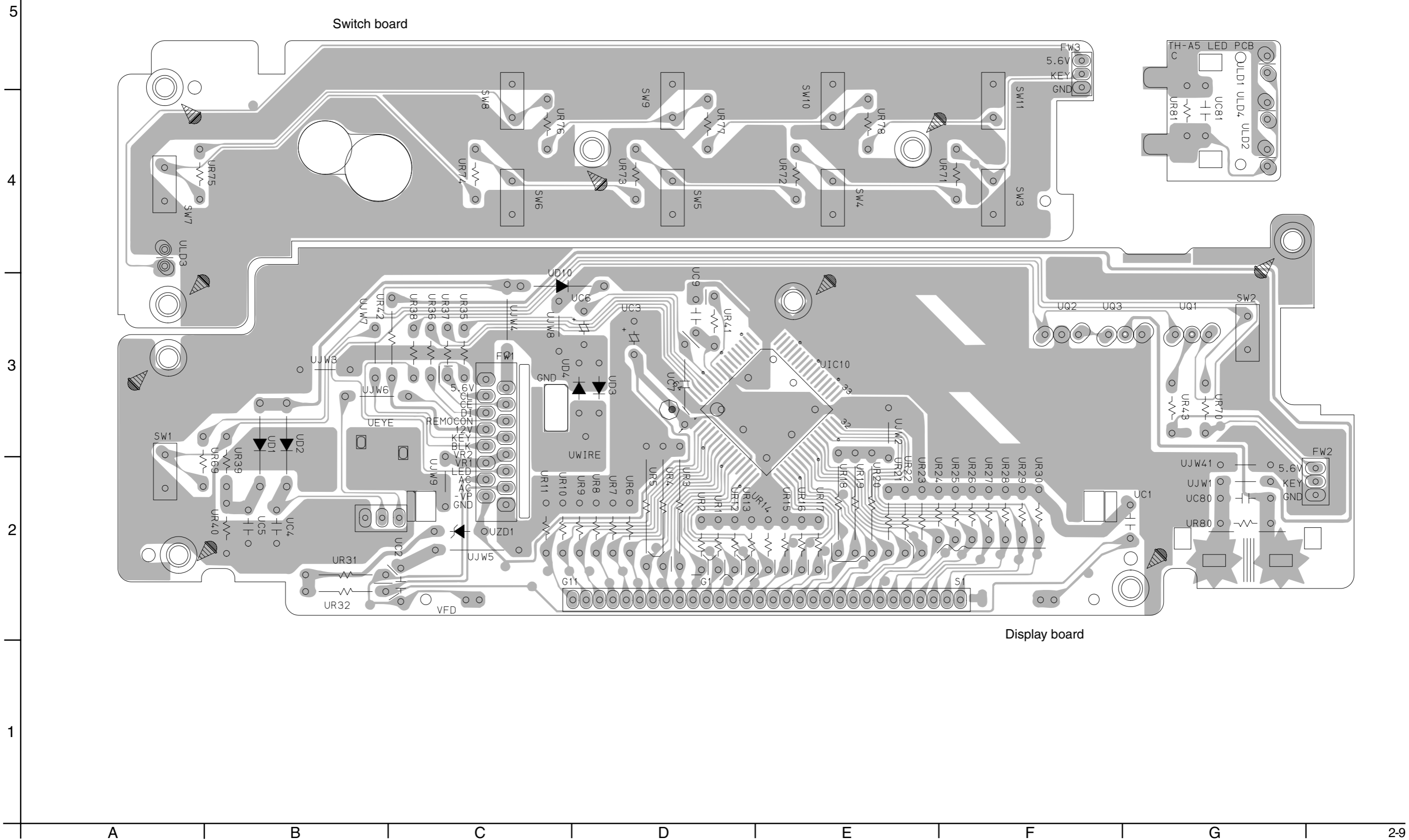
To J3 Sheet 5/6

- Digital data signal
- Digital audio signal
- Video signal



# Printed circuit boards

■ Front board



■ Main board (Forward side)

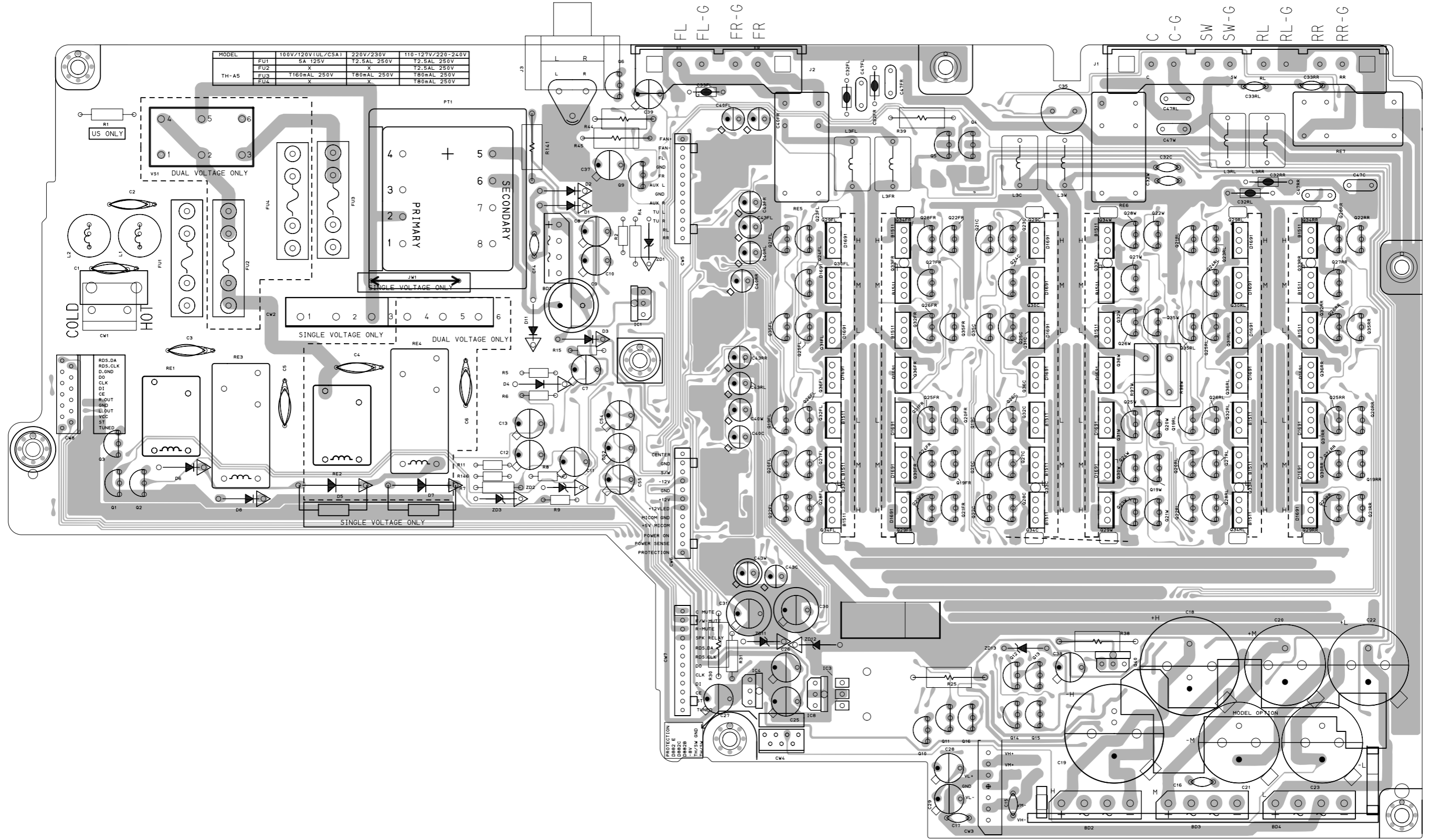
5

4

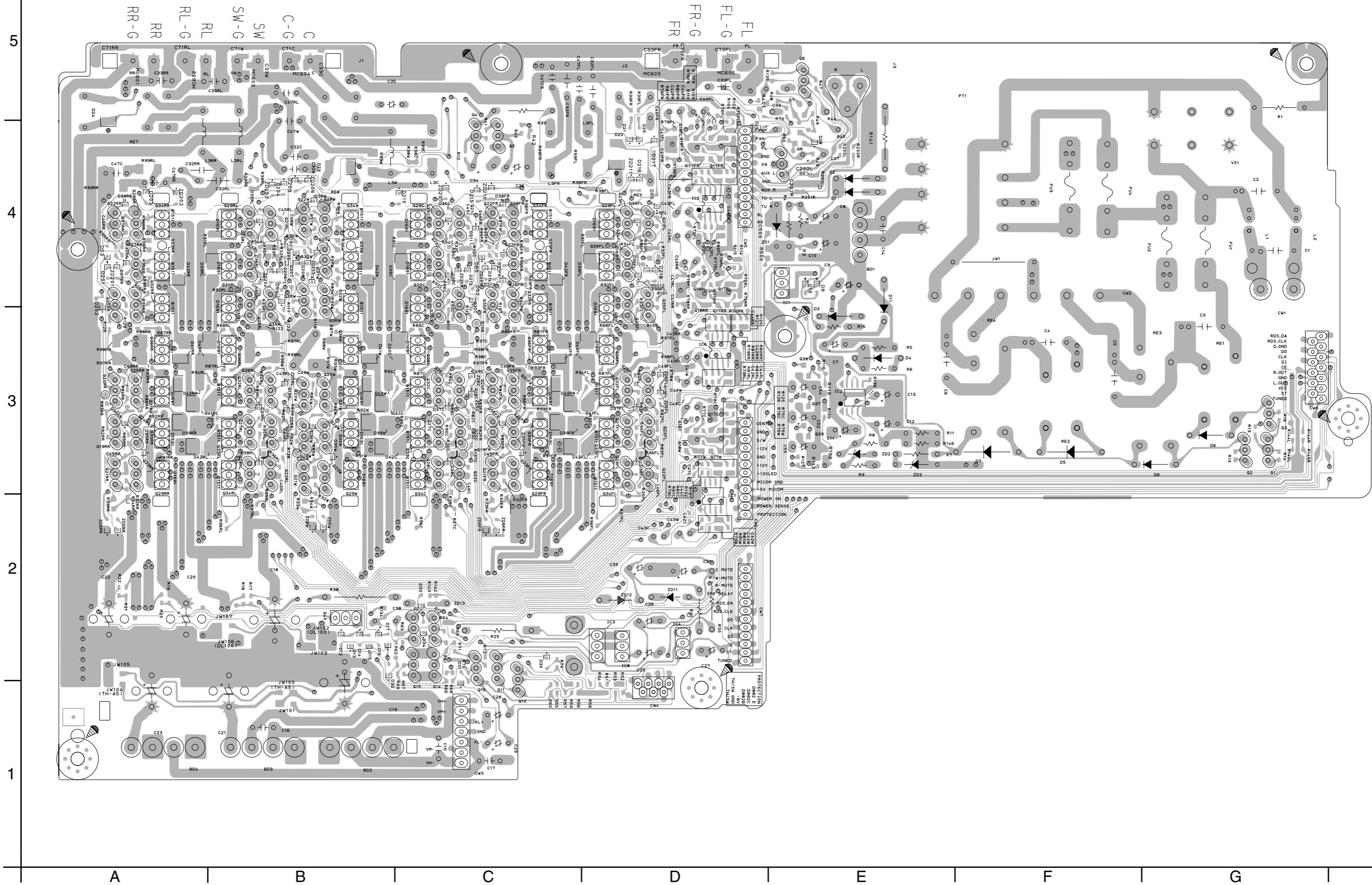
3

2

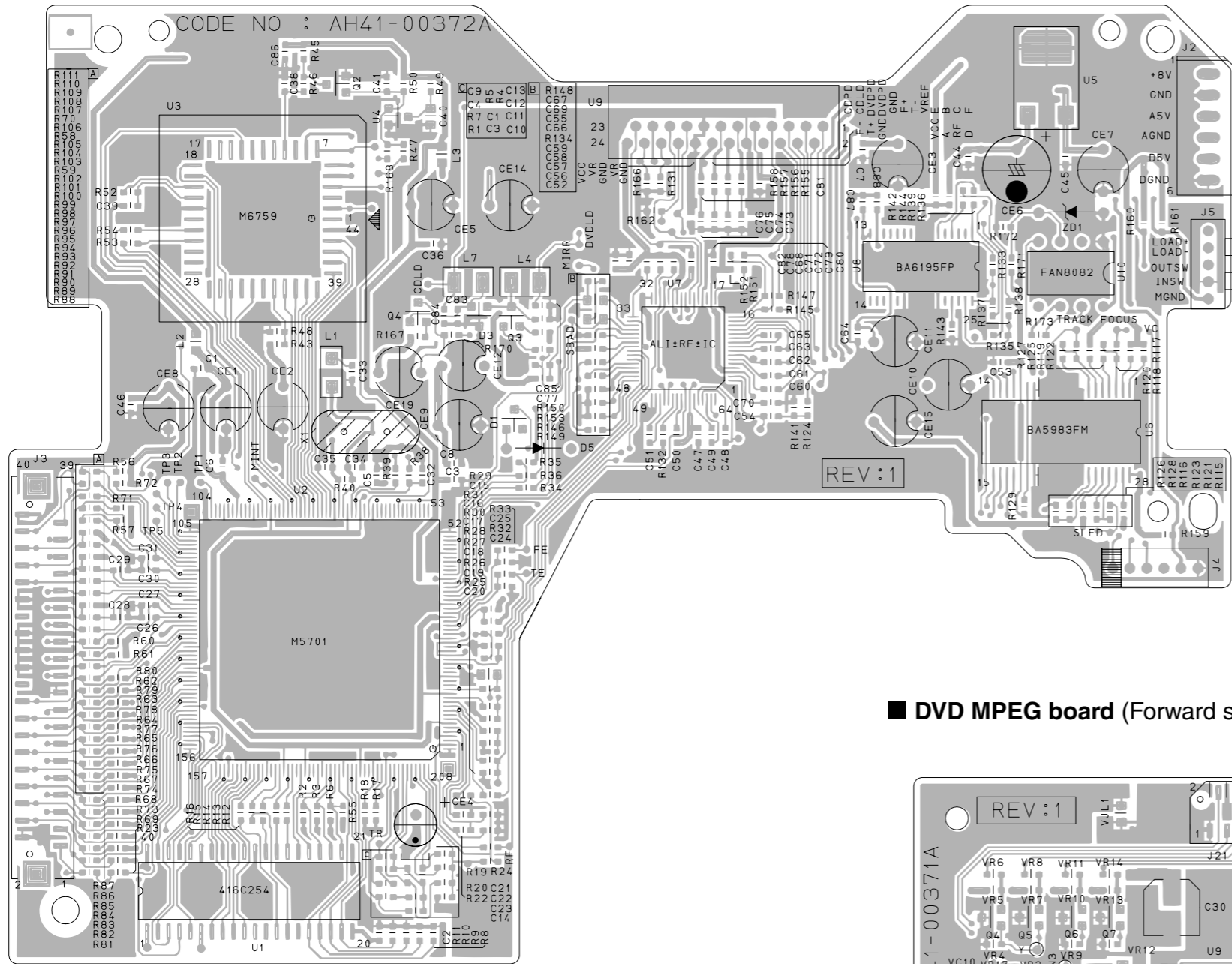
1



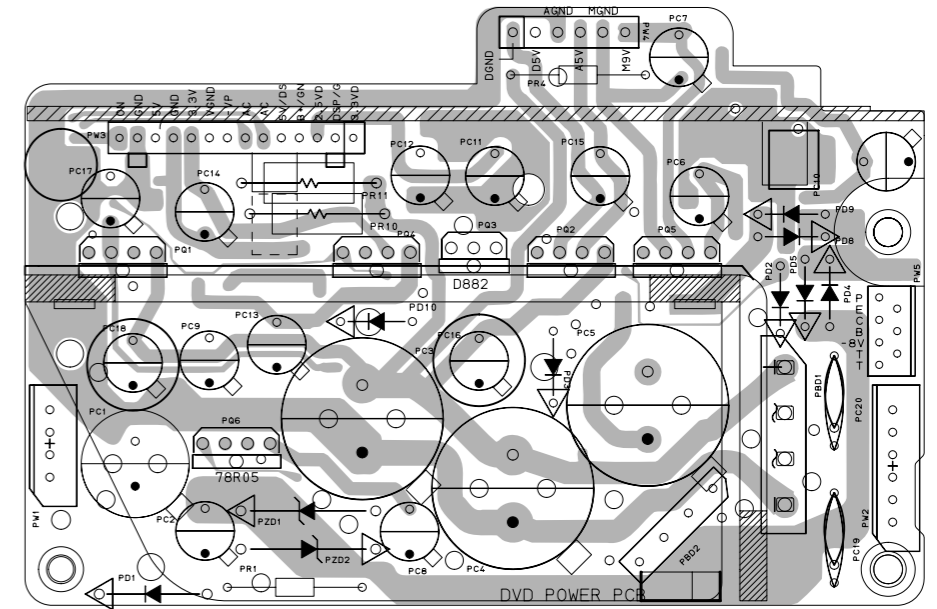
■ Main board (Reverse side)



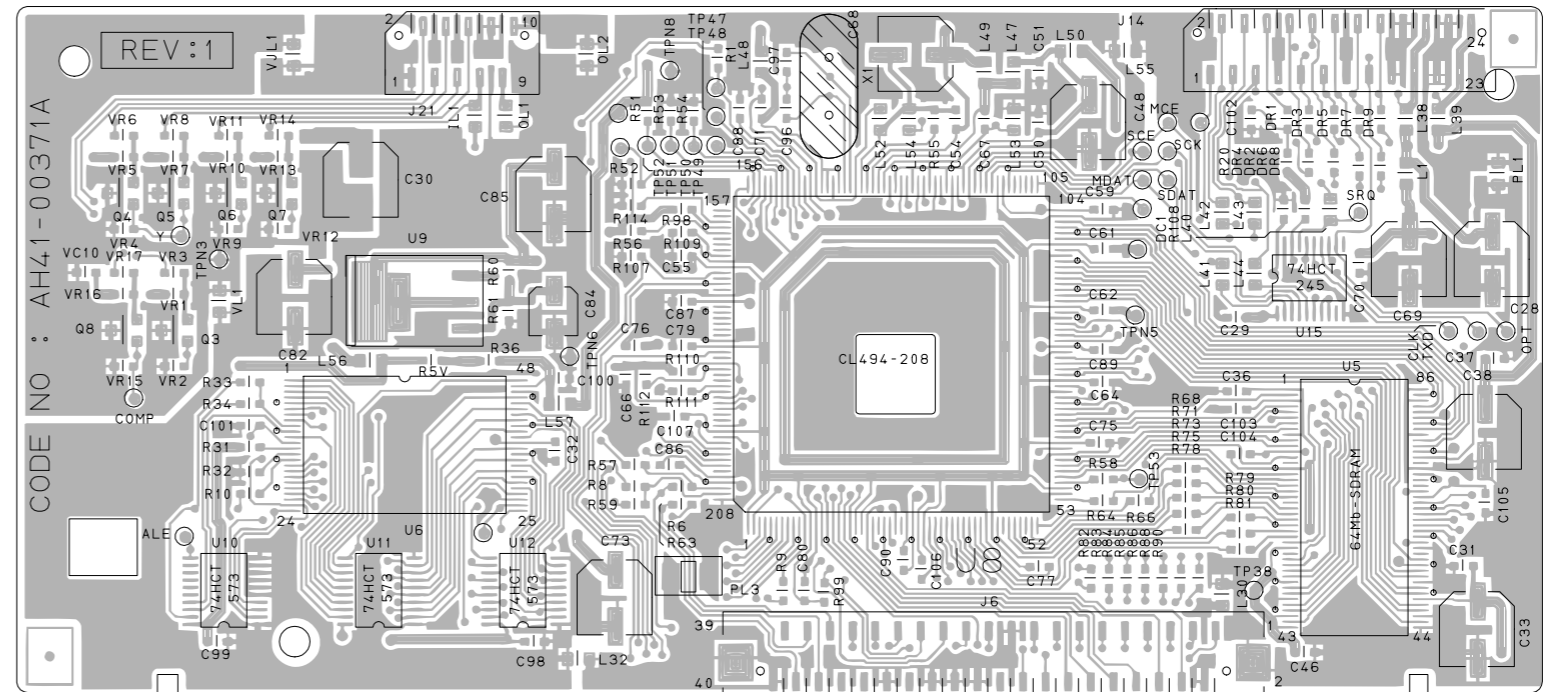
■ DVD loader board (Forward side)



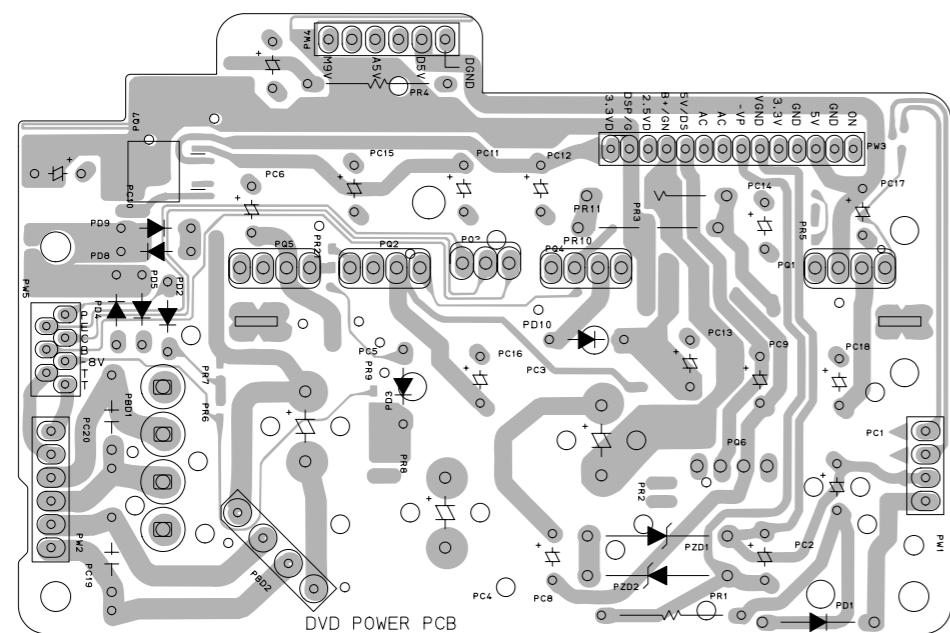
■ DVD power board (Forward side)



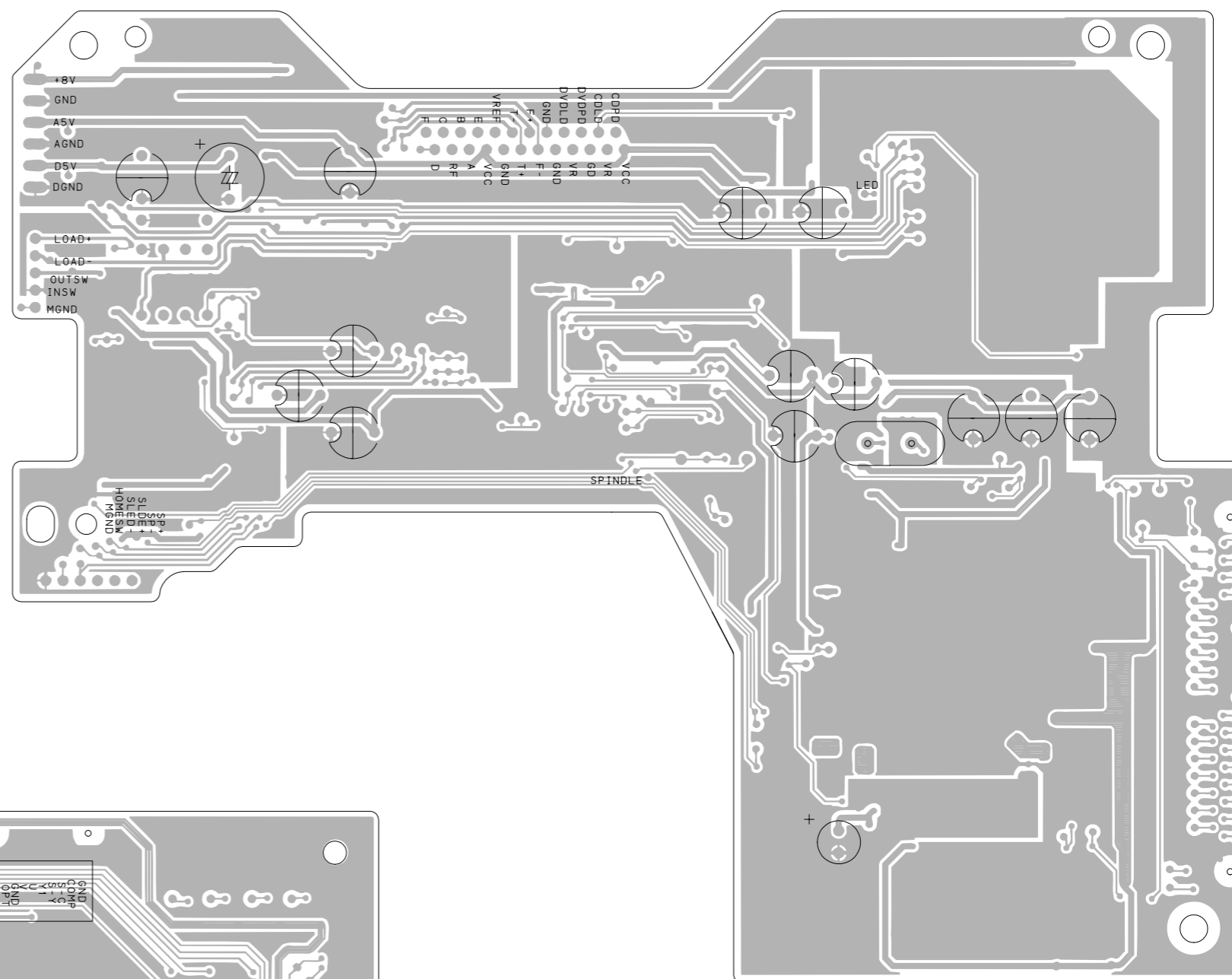
■ DVD MPEG board (Forward side)



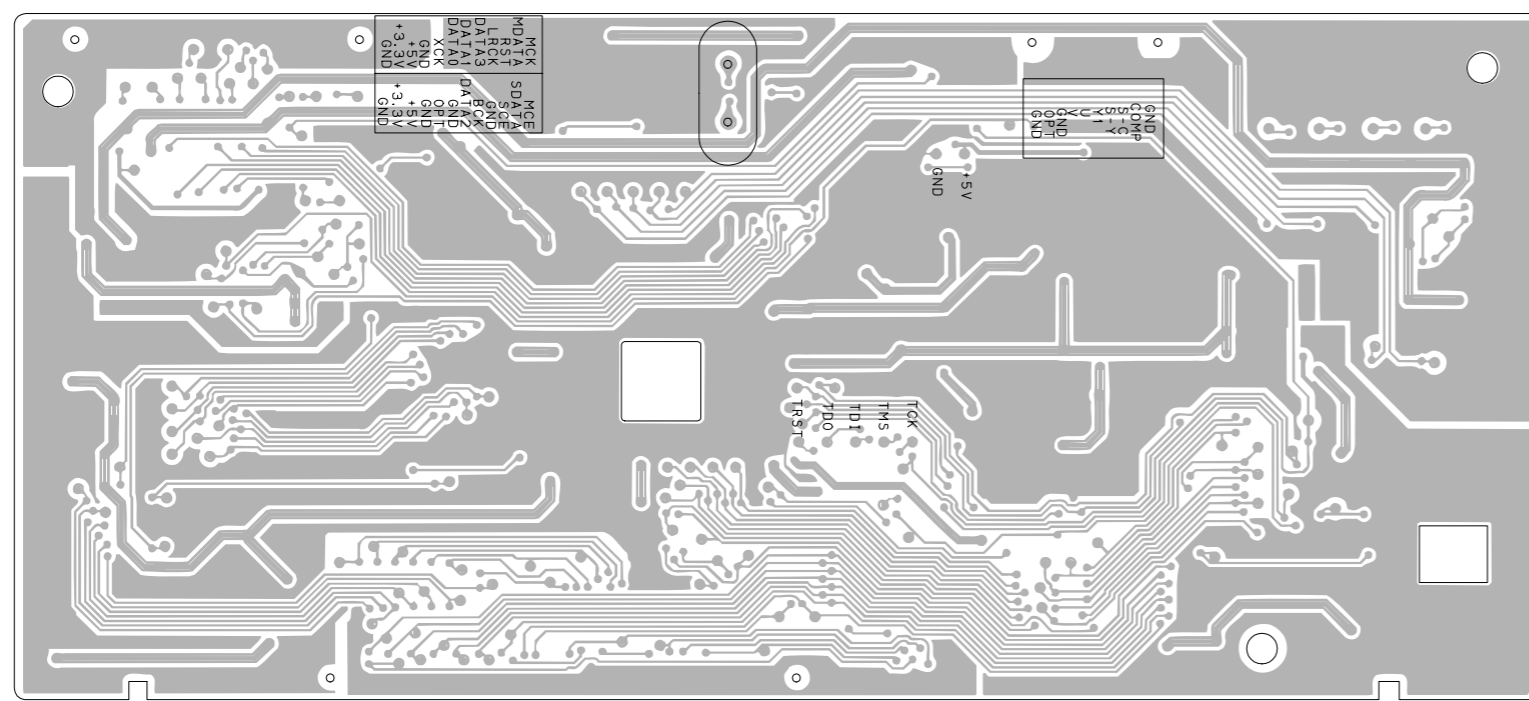
■ DVD power board (Reverse side)



■ DVD loader board (Reverse side)



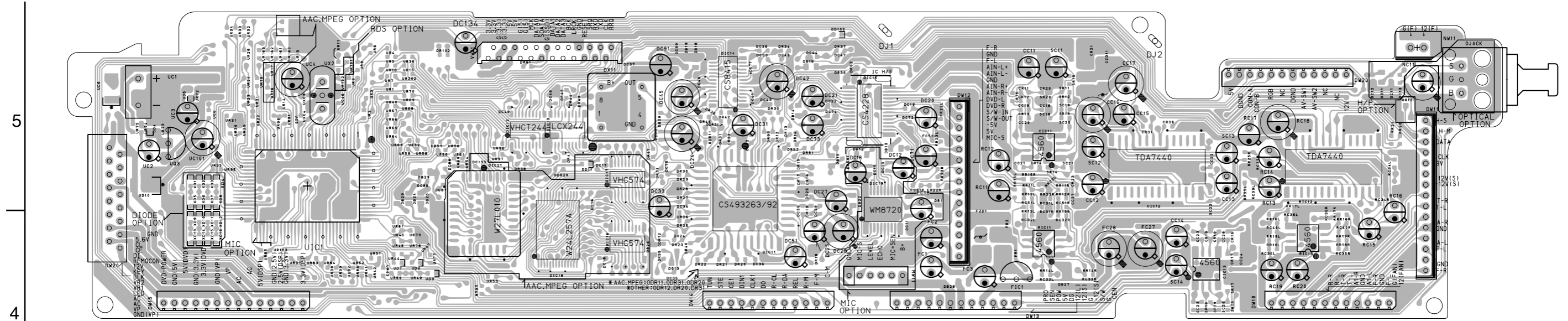
■ DVD MPEG board (Reverse side)



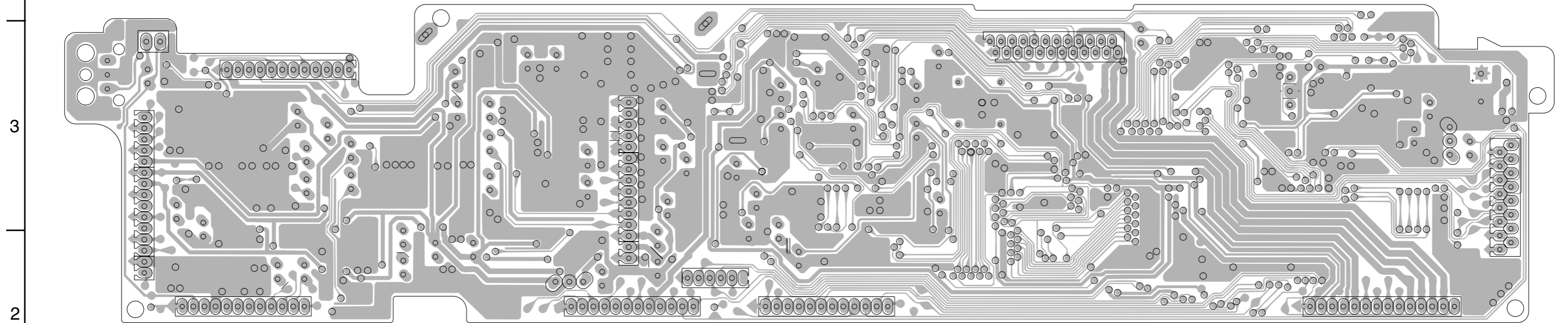
5  
4  
3  
2  
1



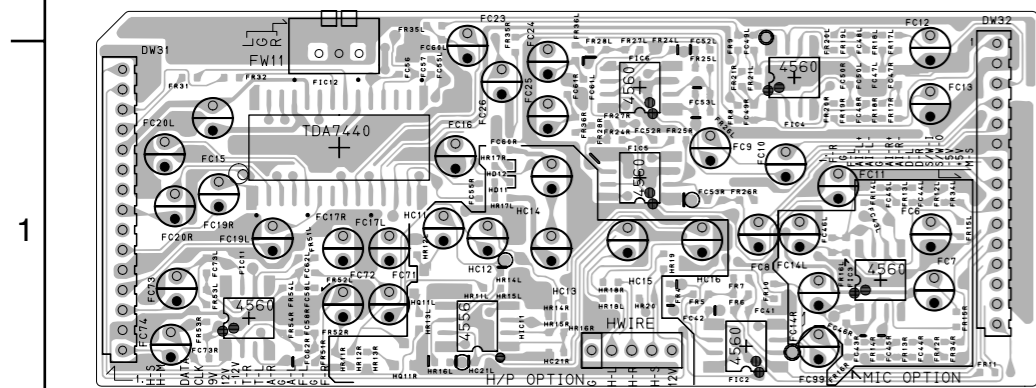
■ DSP1 board (Forward side)



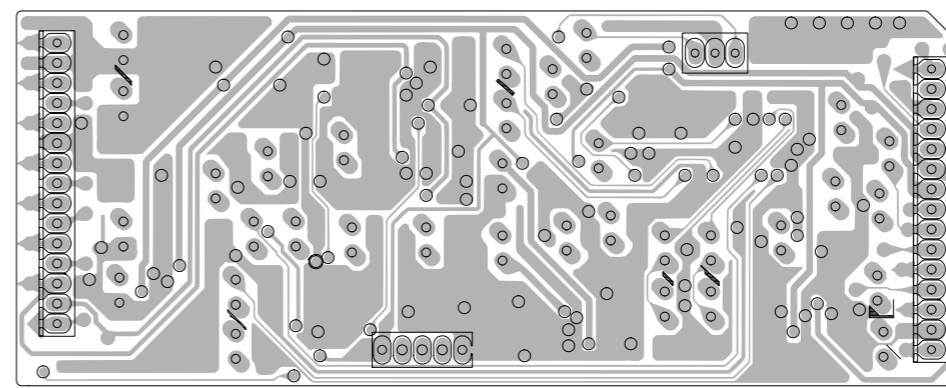
■ DSP1 board (Reverse side)



■ DSP2 board (Forward side)



■ DSP2 board (Reverse side)



■ Jack board

